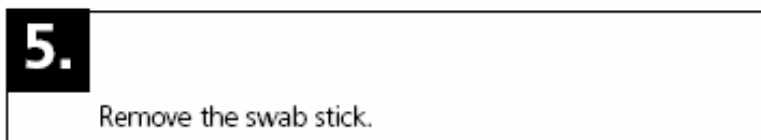
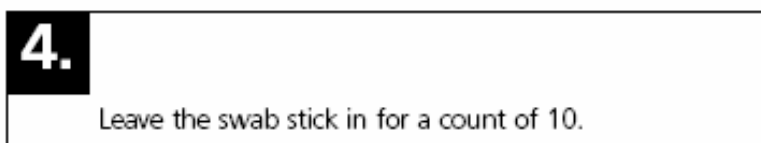
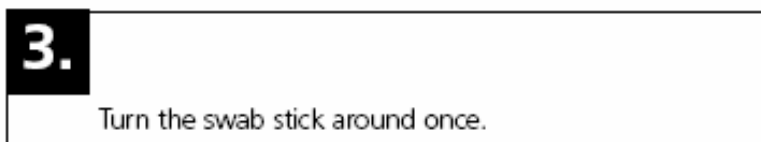
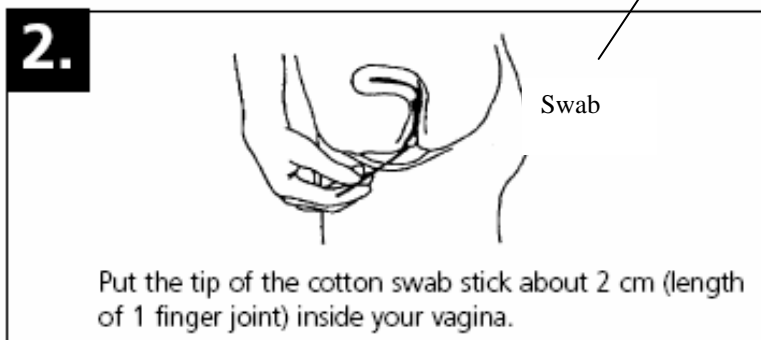
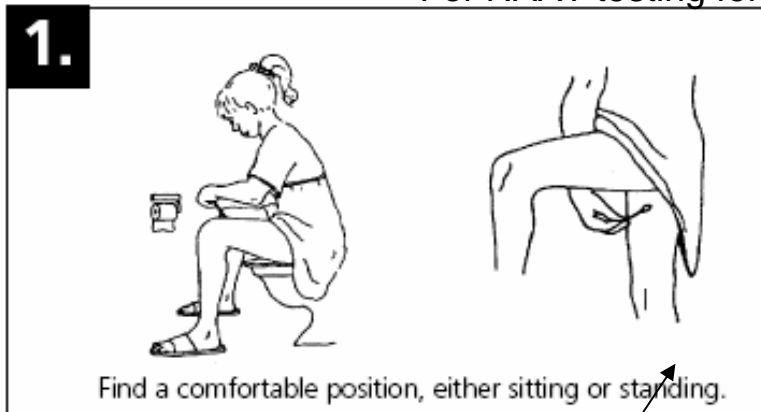
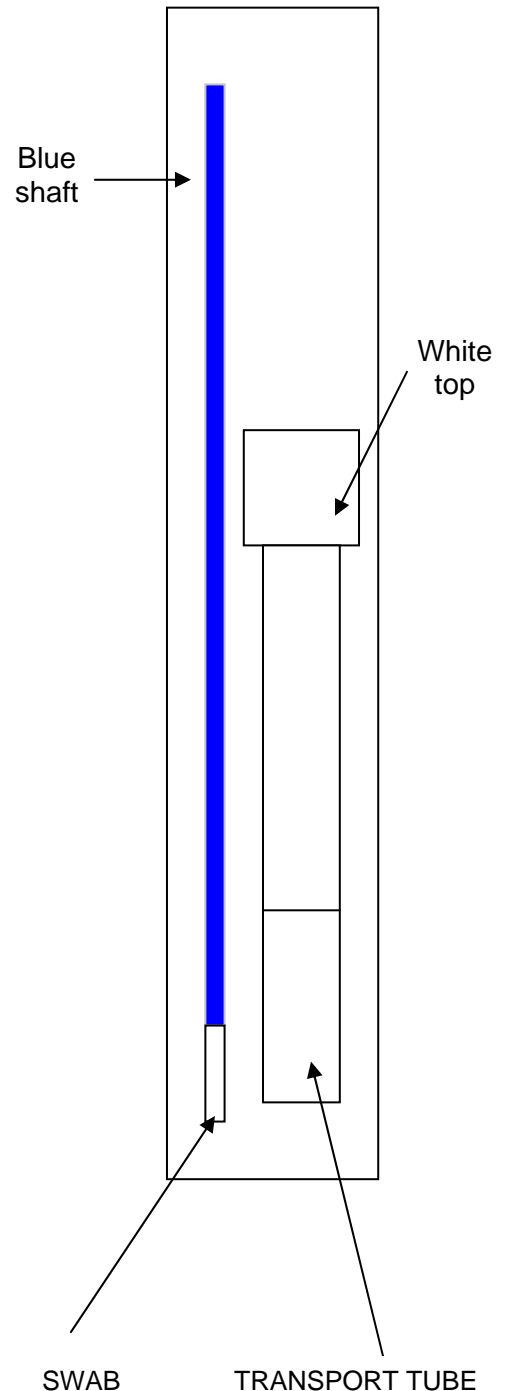


## INSTRUCTIONS ON HOW TO TAKE YOUR OWN LOWER VAGINAL SWAB

For NAAT testing for STI



Diagrams courtesy of Kimberley P.H.U.



Follow the instructions above then .....

- Place the swab into the transport tube provided
- Snap off the shaft of the swab & screw on the transport tube lid firmly
- Label the tube with your full name, time & date, your date of birth
- Place the tube into the plastic specimen bag, with the pathology request form
- Deliver the sample to your nearest pathology collection centre within 6 hrs
- Store sample at room temperature prior to delivery to the collection centre
- See the back of the request form or [www.wdp.com.au](http://www.wdp.com.au) for locations